



## **PokerTracker 3™**

### **PartyPoker Configuration Guide**

Product Version: 3 Beta 9

Document Version: 1.0.0

Created: May 3, 2008

## Contents

Overview .....	3
About Importing Hand Histories .....	4
Manually Importing Hand Histories .....	7
PokerTracker Help & Support .....	8

## Overview

This guide is intended for users who wish to manually configure PokerTracker3 to import hand histories from PartyPoker in the event that hand histories are not automatically configured for import.

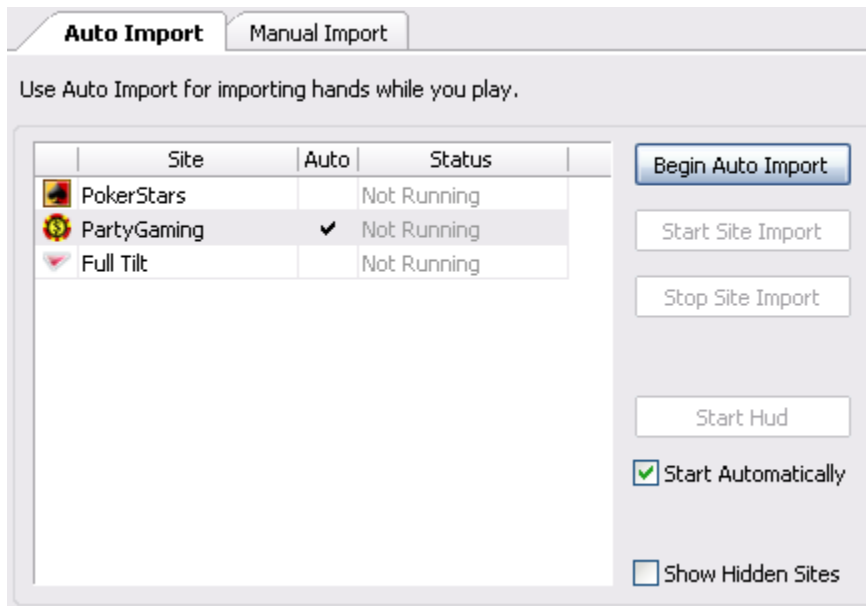
For information on installing and setting up PokerTracker3, see the *PokerTracker3 Quick Start Guide*.

## About Importing Hand Histories

*Note that PartyPoker is referred to as PartyGaming where applicable.*

PokerTracker 3 may not be automatically configured to import hand histories from PartyPoker. You will have to configure PokerTracker manually in order for PokerTracker to automatically import hand histories.

You will notice immediately if PartyPoker is configured to automatically import hand histories by looking at the **Auto Import** tab. A checkmark will appear in the **Auto** field beside PartyGaming as shown in the screenshot below.

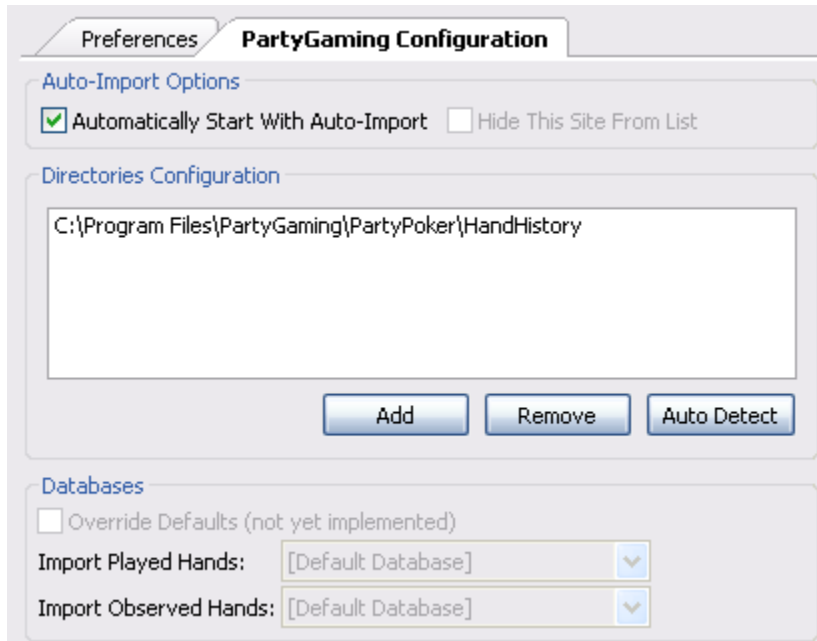


As you can see in the above screenshot, there is a checkmark in the Auto field for PartyGaming. If there is no checkmark in the Auto field, PartyGaming is not configured to automatically import hand histories.

There are several reasons why PokerTracker 3 may not be configured to automatically import hand histories:

- You do not have the PartyPoker client installed on your computer. If you have hand histories with a PartyPoker but no longer have the client installed on your computer, you must locate the directory where your hand histories are located. Go to [www.partypoker.com](http://www.partypoker.com) to download the PartyPoker poker client.
- The PartyPoker client has not been configured to save hand histories to disk. In this case, you must select the directory where your hand histories will be located. Note that you cannot select a directory if you do not have the PartyPoker client installed on your computer.

You will see these errors if you navigate to the PartyGaming **Configuration tab**. The error message appears under the Directory Configuration box as shown below.



If you see any of the above messages, you must manually configure PartyPoker to import hand histories into the database. See *Manually Importing Hand Histories* for more information.

## Configuring Your Hand Histories at PartyPoker

You must configure the PartyPoker client to export hand histories to a designated directory in your hard drive. This is important so that PokerTracker 3 may grab hand histories for the database.


To configure your hand histories in PartyPoker, do the following:

1. On the PartyPoker home screen, click on **Games Rules & Options > Hand History Logs Configuration**. A Hand History Configuration dialog should popup.
2. Select **Yes** in the Hand History Logs should be stored locally on the machine field.
3. Select the **number of days** you wish to keep hand histories in your configured drive or select **how big you want the hand history folder to be** before it automatically deletes hand histories.
4. Click on **Apply**.

Your hand histories will be compiled in a database file at the following path: *C:\Program Files\PartyGaming\PartyPoker\HandHistory*. You will need this path to configure PokerTracker to obtain hand histories from.

## Manually Importing Hand Histories

To manually import hand histories from PartyPoker, do the following:

1. Navigate to the **Import > Auto Import** tab if you are not already there.
2. Click on **PartyGaming** to highlight it and click on the **PartyGaming Configuration** tab.
3. Locate the **directory** where your hand histories are located by clicking on the  button.
4. Click on the **Automatically Start With Auto-Import** checkbox in the Auto-Import Options box.
5. Click on the **Begin Auto Import** button to start importing hand histories into the database.

PokerTracker will now be configured to automatically import hand histories from PartyPoker.

**Tip:** Click on the **Start Automatically** checkbox if you want PokerTracker 3 to automatically import hand histories whenever you launch PokerTracker 3.

## **PokerTracker Help & Support**

There are numerous help documents and tutorials to assist you in configuring and using PokerTracker3. If you cannot find the answer you need from these resources, please search the forums. If your question or problem is not addressed, you should then contact support using the PokerTracker support system.

### **PokerTracker3 Tutorials and Help Documentation**

<http://www.pokertracker3.com/products/PT3/docs>

### **PokerTracker Forums**

<http://www.pokertracker3.com/forums>

### **PokerTracker Support System**

<http://www.pokertracker3.com/support>