

## Zooming In and Out

Zooming in is useful when you want to look at an image closer and in full detail.

Zooming out is useful when you want to look at an image from a distance. Zooming out is usually used after an image is zoomed in on in order to view the actual size of the image.

**Note: to view the actual size of your image, view it at 100%. For information on resizing your image, see your Paint.NET documentation.**

To zoom in and out, do the following:

**Note: zooming in and out occurs in increments of the power of two. You can enter a custom percentage by clicking in the  field, entering in a percentage value, and pressing return on your keyboard.**

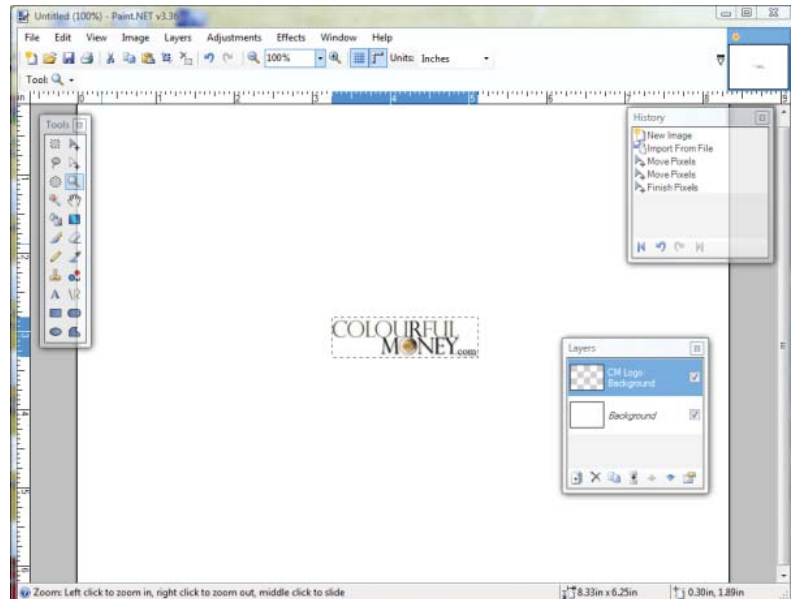


Figure 1 - Image zoomed in at 100%

### TIP

Alternatively, you can zoom in and out using keyboard shortcuts.

On your keyboard, press **CTRL++** to zoom in, **CTRL+-** to zoom out, or **CTRL+B** to zoom to window.

1. You can zoom in and out in any of these 3 ways:

a) In your toolbar, click on the  icon to zoom in or the  icon to zoom out.

Proceed to step 2a.

- or -

b) In the your menu bar, click on **View** and click on **zoom in**, **zoom out**, or **zoom to window**.



Proceed to step 2b.

- or -

c) In your toolbar and in the  field, click on the **drop down arrow** and select a **percentage** to zoom in or out.

2. Step 2 depends on what method you used to zoom in or out in in step 1.

**Note: step 2 is only necessary if you performed steps 1a or 1b.**

a) Click on the  or  icon until you reach the zoom level you desire.

- or -


b) Repeat step **1b** until you reach the zoom level you desire.

## Rotating Images Automatically

Rotating images automatically is useful when you want to rotate images clockwise or counterclockwise by 90 degrees or by 180 degrees.

**Note: Paint.NET uses these software pre-configured rotations to automatically rotate images. You cannot configure automatic rotations. For information on rotating your images manually, see your Paint.NET documentation.**

To rotate your images, do the following:

1. In your tools window, click on the  icon.
2. Select your **image**.

You will know your image is selected when there is a green box surrounding it with nodes.

3. In your menu bar, click on **Image** and click on either **Rotate 90 degrees clockwise**, **Rotate 90 degrees counter clockwise**, or **Rotate 180 degrees**.

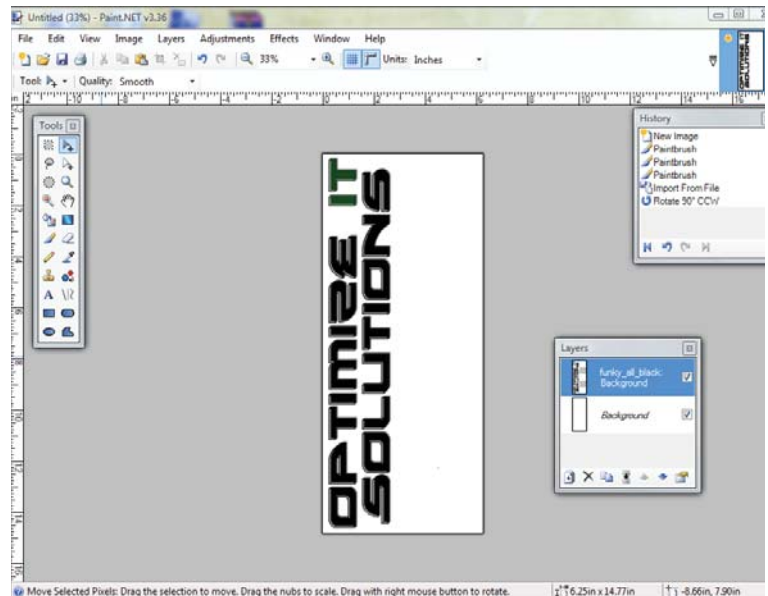


Figure 2 - Image rotated 90 degrees counterclockwise

## Configuring Units for Your Ruler

Configuring your ruler's units is useful when you want to measure images in a particular unit.

There are 3 units to choose from:

- Pixels
- Inches
- Centimeters

To configure units for your ruler, do the following:

In your toolbar and in the Units field, click on the **dropdown arrow** and select **Pixels**, **Inches**, or **Centimeters**.

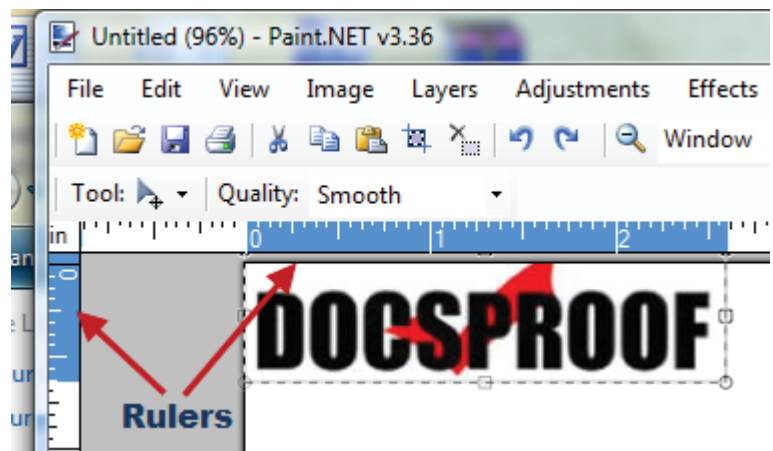


Figure 3 - Image measured in inches as highlighted in the rulers